

# Ambient & Patch Lining Sewer Rehabilitation

keeping things moving...

**DrainsAid**  
First Aid For All Your Drains





DrainsAid™ has over 40 years experience of providing drainage repair and rehabilitation services to the UK's regulated Water and Wastewater sector and in recent years we have invested heavily in CIPP lining technology.

Our operations are carried out in strict accord with our Management Systems that are fully accredited to ISO 9001:2015 (Quality); ISO 14001 (Environmental) and OSHAS 18001(Health & Safety) standards. Our Health and Safety System is also fully SSIP certified.

We are accredited by Achilles UVDB Verify and RISQS vendor assessment schemes used by the majority of the utility, oil & gas and rail sector clients and Construction Line (Gold) recognised by the majority of public sector clients.

## Ambient Cure Sewer Rehabilitation

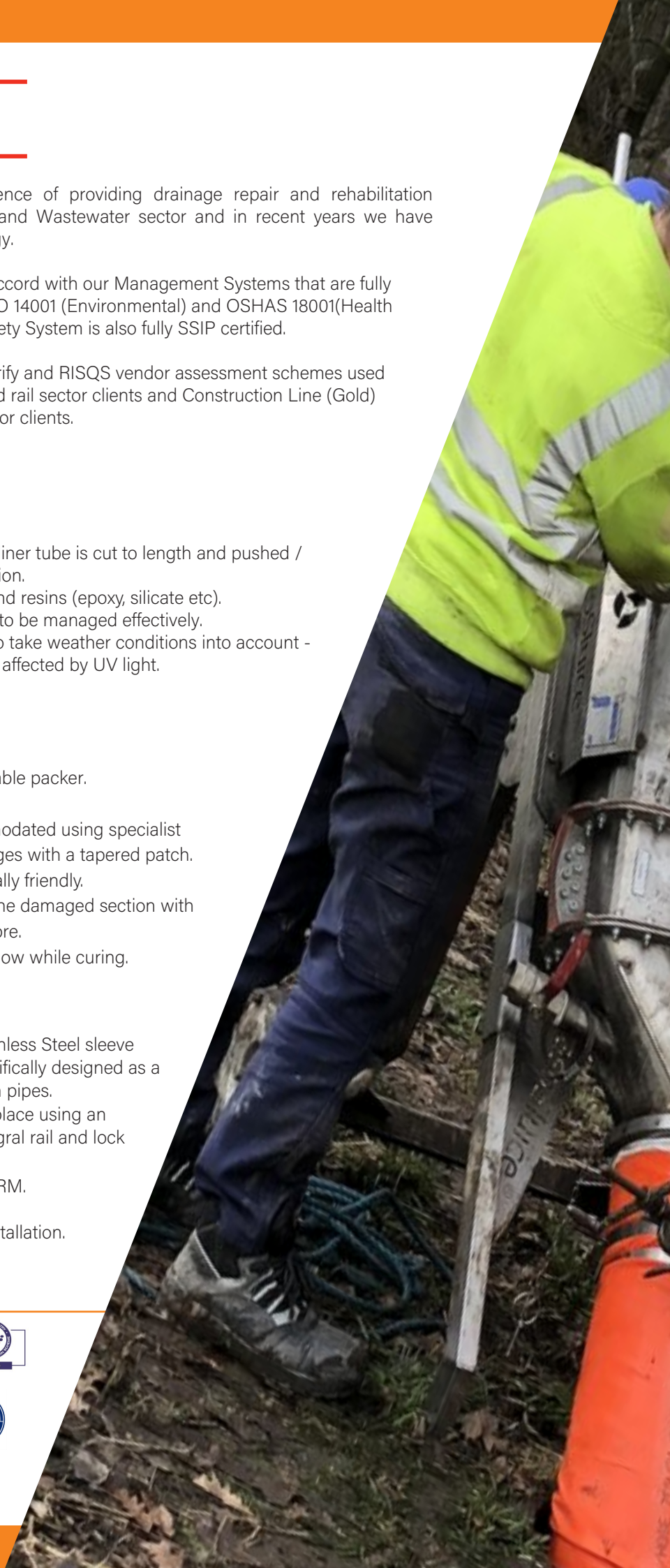
An appropriate sized resin impregnated liner tube is cut to length and pushed / pulled into place or inverted before inflation.  
Versatile with different lining materials and resins (epoxy, silicate etc).  
Speed of process enables existing flows to be managed effectively.  
Proportion of resin to catalyst adjusted to take weather conditions into account - lower in summer, higher in winter as it is affected by UV light.  
Can be installed from one access point.

## Patch Lining

Glass fibre patches inserted on an inflatable packer.  
Only needs a single point of access.  
Bends up to 90 degrees can be accommodated using specialist packers. Can be used on diameter changes with a tapered patch.  
Stops water ingress and is environmentally friendly.  
Considered to be as good as replacing the damaged section with new due to the properties of the glass fibre.  
Packers have flow-through to maintain flow while curing.

## Quick-Lock

Quick-Lock consists of a rolled V4A Stainless Steel sleeve covered with an EPDM rubber seal specifically designed as a patch repair system for repairing voids in pipes.  
The Stainless Steel sleeve ratchets into place using an inflatable packer and secured by an integral rail and lock system.  
Type I structural liner as defined in the SRM.  
(Published by WRc)  
Allows flows to be maintained during installation.  
No curing time so very quick installation.  
Can be installed in series.







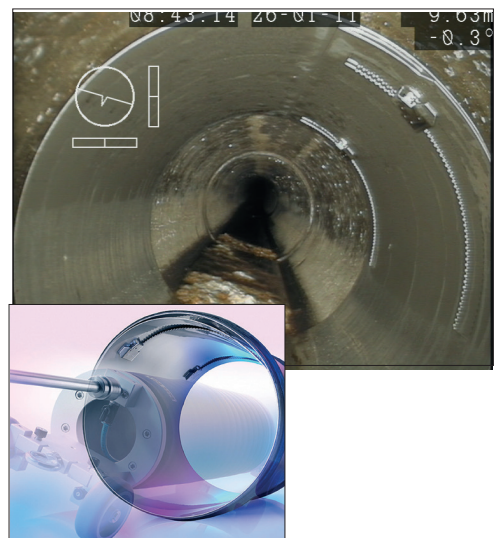
## Ambient Cure



## Patch Lining



## Quick Lock





**DrainsAid™ Hotline: 0800 0180123**

**Our list of expert services include:**

- Cleaning/Desilting
- Repair work
- Maintenance
- Jetting
- CCTV survey
- Quick Lock system
- Lining
- Excavating
- Pipe bursting
- Traffic management
- Drainage design

tel: **0800 0180123**

visit: [www.drainsaid.com](http://www.drainsaid.com)

e-mail: [service@drainsaid.com](mailto:service@drainsaid.com)

