

# Hermes M-Coating Manhole Rehabilitation

keeping things moving...

**DrainsAid**  
First Aid For All Your Drains





DrainsAid has over 40 years' experience of providing high quality drainage repair and rehabilitation services to the UK's regulated Water and Wastewater sector and has recently invested heavily in manhole renovation technology.

Our operations are carried out in strict accord with our Management Systems that are accredited to ISO 9001:2015 (Quality); ISO 14001:2015 (Environmental) and ISO 45001:2018 (Health and Safety) standards.

We are accredited by Achilles UVDB Verify and RISQS vendor assessment schemes used by the utility, oil & gas and rail sector clients and are also Construction Line (Gold) and CHAS recognised by public sector clients and therefore SSIP approved.

## Hermes M-Coating System

The innovative Hermes M-Coating System used in conjunction with ERGELIT dry mortars is the perfect technology for manhole coating and has been a proven method of rehabilitating corroded and/or leaking manholes since 1999. There are several types of mortar and these can be tailored to suit the application i.e. for H<sub>2</sub>S attack.

The M-Coating system is a solution that can be used on a wide range of applications including tunnel maintenance, bunds, culverts, and any other surface or structure that requires protective coatings. One of the key benefits of the system is that it is a compact unit and allows access to assets in restricted working locations.

### The Process

The centrifugal spray technique means that chambers up to 25 meters deep can be coated to any realistic thickness. The necessary technical equipment is housed in our specially built trailer.

The process is computer controlled from the surface, allowing operatives to work outside the chamber with minimal entry requirements.

The manholes are cleaned using the integral dual rotating high pressure jets on an automated winch, leaving a firm surface for the M-Coating ERGELIT mortar to bond to.

The M-Coating process is based on an integrated system consisting of a mixer, a pump and a centrifugal spray. Once cleaned the high pressure jetting unit is replaced with a centrifugal spray unit on the automatic winch to apply the M-Coating mortar to the walls of the manhole.

The computer controlled centrifugal spray runs at 5000 rotations per minute and operates until the pre-determined coating thickness is reached.

The M-Coating system is an excellent solution to the rehabilitation of manholes, saving time and cost. The M-Coating system is a solution that can be used on a wide range of applications including tunnel maintenance, bunds, culverts, and any other surface or structure that requires protective coatings.





# Hermes M-Coating System

Based on 15 years of development and experience, the Hermes M-Coating system is an innovative renovation technique for drains and sewers.

- Round and rectangle manholes
- Centrifuge spray technique
- Coats chambers up to 25m deep
- Coated to variable thickness levels
- No man entry required
- Quick & simple application
- Equipment supplied as an 'all in one' van system



Before



During



After



## DrainsAid Manhole Rehabilitation

Before

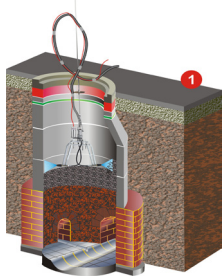


After

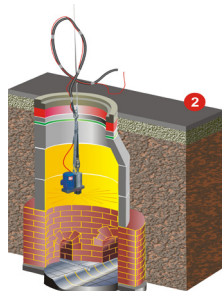




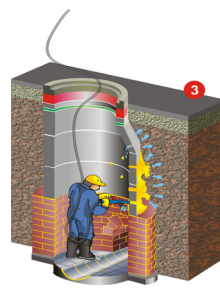
## Areas of application



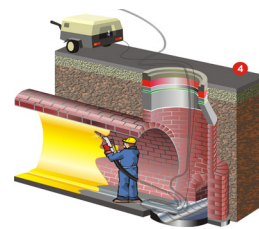
1 TSSR high pressure manhole cleaning system



2 Automa manhole coating



3 Injection seal with ERGELIT-KBi



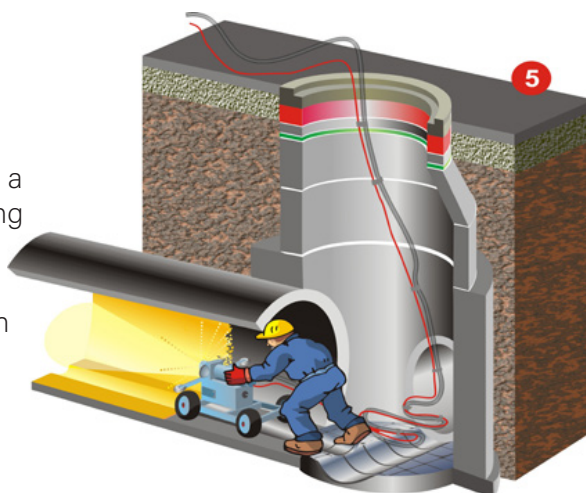
4. Wetspraying

5. Horizontal Spray Lining

## Spray Lining

Spray Lining Rehabilitation using ERGELIT dry mortar (KS1 / KS2) is a high quality alternative to CIPP lining or pipe replacement.

The Hermes M-Coating System can be used for a wide range of applications including tunnel maintenance, bunds, culverts and any other surface or structure that requires a protective coating.



The pipe in need of renovation is first flushed through with the usual cleansing equipment, so that it is free of debris. After that the pipe must be cleaned using a rotating spray-head.

Any holes or joints permitting water ingress are sealed using ERGELIT KBi injection mortar before relining begins. The ERGELIT dry mortar is mixed with water on site, before being pumped by hose from the mixer to the point of application and sprayed on the surface using a centrifugal pump. The high centrifugal force ensures excellent adhesion to the substrate, which is enhanced by bonding agents included in the mortar.

The mortar's fast setting time ensures flows need only be interrupted for short periods of time. system, while work commences. Wastewater can resume flows 4 hours after the spraying process is completed.

Once the mortar has cured, the old defective pipe will be fully rehabilitated, with successful results that will be effective for decades.



# DrainsAid Pipe Spray Lining

Before



After



Scarborough Outfall- Trolley System

Before



After



White Brook Culvert, Oldham - Hand Sprayed.





**DrainsAid Hotline: 0800 0180123**

**Our list of expert services include:**

- Cleaning/Desilting
- Repair work
- Maintenance
- Jetting
- CCTV survey
- Quick Lock system
- Lining
- Excavating
- Pipe bursting
- Traffic management
- Drainage design

tel: **0800 0180123**

visit: [www.drainsaid.com](http://www.drainsaid.com)

e-mail: [service@drainsaid.com](mailto:service@drainsaid.com)

